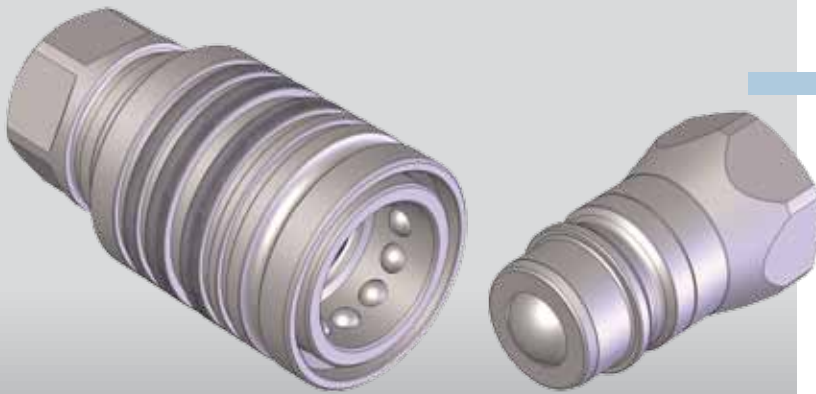


PUSH PULL

SFERA
BALL
KUGEL
BILLE



Nominal size				Max working pressure	Rated flow	Max flow rate	Min burst pressure			Fluid spillage
DNP	BG	ISO	mm				MPa	MPa	MPa	
13	3	12.5	8,9	20	30	55	80	96	130	1,9

1 MPa = 145,04 psi • 1 l = 0,264 gal

Caratteristiche tecniche

- Norma: ISO 7241-1 A
- Ghiera: doppia azione
- Occlusione: sfera
- Aggancio: sfere radiali
- Materiale: acciaio
- Finitura: Zn-Fe (Cr III)
- Filettature: BSP - NPT - SAE
- Guarnizioni standard: NBR
- Temperatura d'esercizio: -25 °C +100 °C
- Guarnizioni opzionali: FKM, EPDM o altro
- Pressioni di esercizio: 200 bar
- Connessione in pressione: non consentita

Technical data

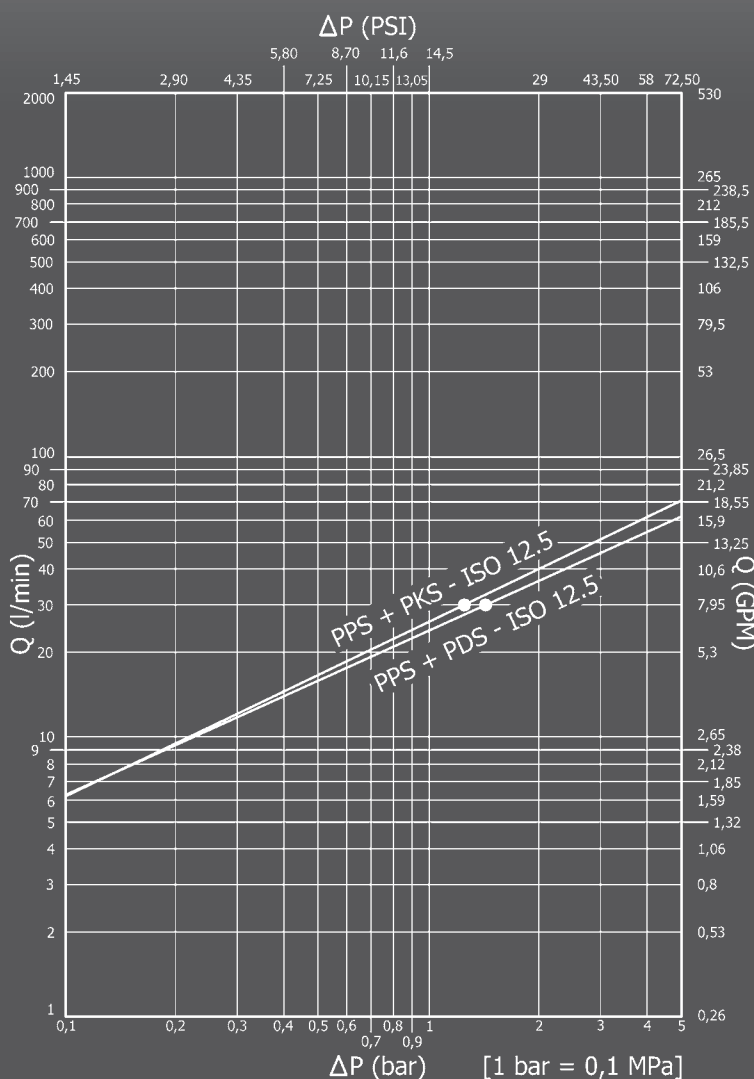
- Standard: ISO 7241-1 A
- Sleeve: double acting
- Occlusion: ball
- Locking: radial balls
- Material: steel
- Finishing: Zn-Fe (Cr III)
- Threads: BSP - NPT - SAE
- Standard seals: NBR
- Working temperature: -25 °C +100 °C
- Optional seals: FKM, EPDM or more
- Working pressure: 200 bar
- Connection under pressure: not allowed

Technische Merkmale

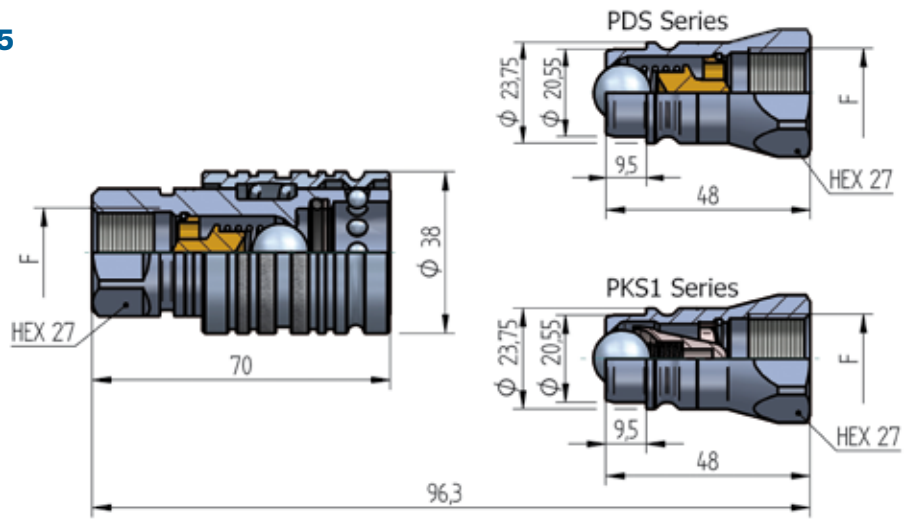
- Norm: ISO 7241-1 A
- Hülse: doppelwirkend
- Verschluss: kugel
- Kupplung: Radialkugeln
- Werkstoff: Stahl
- Ausführung: Zn-Fe (Cr III)
- Gewinde: BSP - NPT - SAE
- Standard-Dichtungen: NBR
- Betriebstemperatur: -25 °C +100 °C
- Dichtungen nach Wahl: FKM, EPDM, usw.
- Betriebsdruck: 200 bar
- Kuppeln unter Druck: nicht möglich

Caracteristiques techniques

- Norme: ISO 7241-1 A
- Douille: double action
- Obturation: bille
- Accrochage: billes radiales
- Matériel: acier
- Traitement: Zn-Fe (Cr III)
- Taraudage: BSP - NPT - SAE
- Joints standard: NBR
- Température de service: -25 °C +100 °C
- Joints facultatifs: FKM, EPDM, ect.
- Pression de service: 200 bar
- Connexion sous pression: pas possible

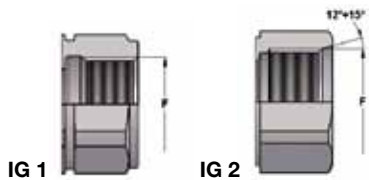


PPS1 - DN13 - BG 3 - ISO 12.5



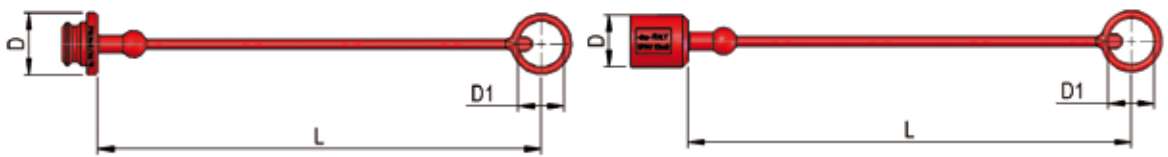
THREADS	F	STANDARD	FEMMINA - FEMALE - MUFFE - FEMELLE			MASCIO - MALE - STECKER - MALE		
			COD. F	Weight (g)	Packaging (pcs.)	COD. M	Weight (g)	Packaging (pcs.)
IG1	BSP 1/2"	DIN 3852-2-X	PPS1.1313.002	305	50	PDS1.1313.003	101	200
	BSP 1/2"	DIN 3852-2-X				PKS1.1313.003	99	200
	NPT 1/2"	ANSI B1.20.3	PPS1.1313.012	307	50	PDS1.1313.013	103	200
	NPT 1/2"	ANSI B1.20.3				PKS1.1313.013	100	200
IG2	3/4" -16 UNF 2B	SAE J 1926-1	PPS1.1319.032	311	50	PDS4.1319.033	108	200

THREADS

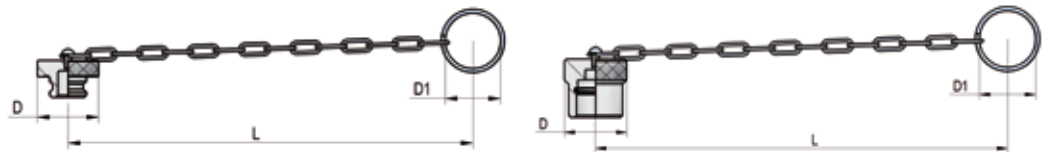


PLASTIC CAPS

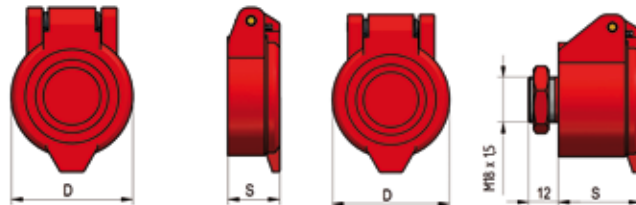
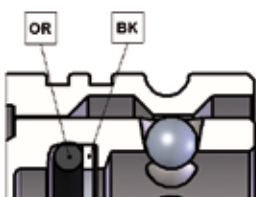
NOMINAL SIZE		FEMALE DUST PLUG						MALE DUST CAP						COLOUR	MATERIAL
DNP	BG	ISO	COD. F	Dimensions			Weight (g)	COD. M	Dimensions			Weight (g)			
				D	L	D1			D	L	D1				
13	3	12.5	SPAV.13002	35	250	26	20	SPAV.13003	29	250	26	21		PVC	
13	3	12.5	SPAV.13012	35	250	26	20	SPAV.13013	29	250	26	21		PVC	
13	3	12.5	SPAV.13022	35	250	26	20	SPAV.13023	29	250	26	21		PVC	
13	3	12.5	SPAV.13032	35	250	26	20	SPAV.13033	29	250	26	21		PVC	
13	3	12.5	SPAV.13042	35	250	26	20	SPAV.13043	29	250	26	21		PVC	
13	3	12.5	SPAV.13052	35	250	26	20	SPAV.13053	29	250	26	21		PVC	
13	3	12.5	SPAV.13062	35	250	26	20	SPAV.13063	29	250	26	21		PVC	


METAL CAPS

NOMINAL SIZE		FEMALE DUST PLUG						MALE DUST CAP						MATERIAL
DNP	BG	ISO	COD. F	Dimensions			Weight (g)	COD. M	Dimensions			Weight (g)		
				D	L	D1			D	L	D1			
13	3	12.5	SPAV.13202	38	205	32	51	SPAV.13203	38	205	32	70	Aluminum	


AUTOMATIC CAPS

NOMINAL SIZE		AUTOMATIC FEMALE CAP						AUTOMATIC MALE CAP						COLOUR	MATERIAL
DNP	BG	ISO	COD. F	Dimensions		Weight (g)	COD. M	Dimensions		Weight (g)					
				D	S			D	S						
13	3	12.5	SPPV.13302	46	18,4	24	SPPV.13303	46	33	59		Nylon			
13	3	12.5	SPPV.13312	46	18,4	24	-	-	-	-		Nylon			
13	3	12.5	SPPV.13322	46	18,4	24	-	-	-	-		Nylon			
13	3	12.5	SPPV.13332	46	18,4	24	-	-	-	-		Nylon			
13	3	12.5	SPPV.13342	46	18,4	24	SPPV.13343	46	33	59		Nylon			


SPARE PARTS


NOMINAL SIZE		FEMALE GASKET			
DNP	BG	ISO	OR (NBR*)	BK (PTFE)	
13	3	12.5	PAV.013.120	PAV.013.130	

* AL CODICE DELLA GUARNIZIONE IN NBR AGGIUNGERE 'E' PER EPDM O 'V' PER VITON
TO THE NBR GASKET CODE ADD 'E' FOR EPDM OR 'V' FOR VITON

ZU DER ARTIKELNR. DER NBR DICHTUNG GEBEN SIE 'E' FUER EPDM ODER 'V' FUER VITON AN

AU CODE DU JOINT EN NBR JOINDRE 'E' POUR EPDM OU 'V' POUR VITON